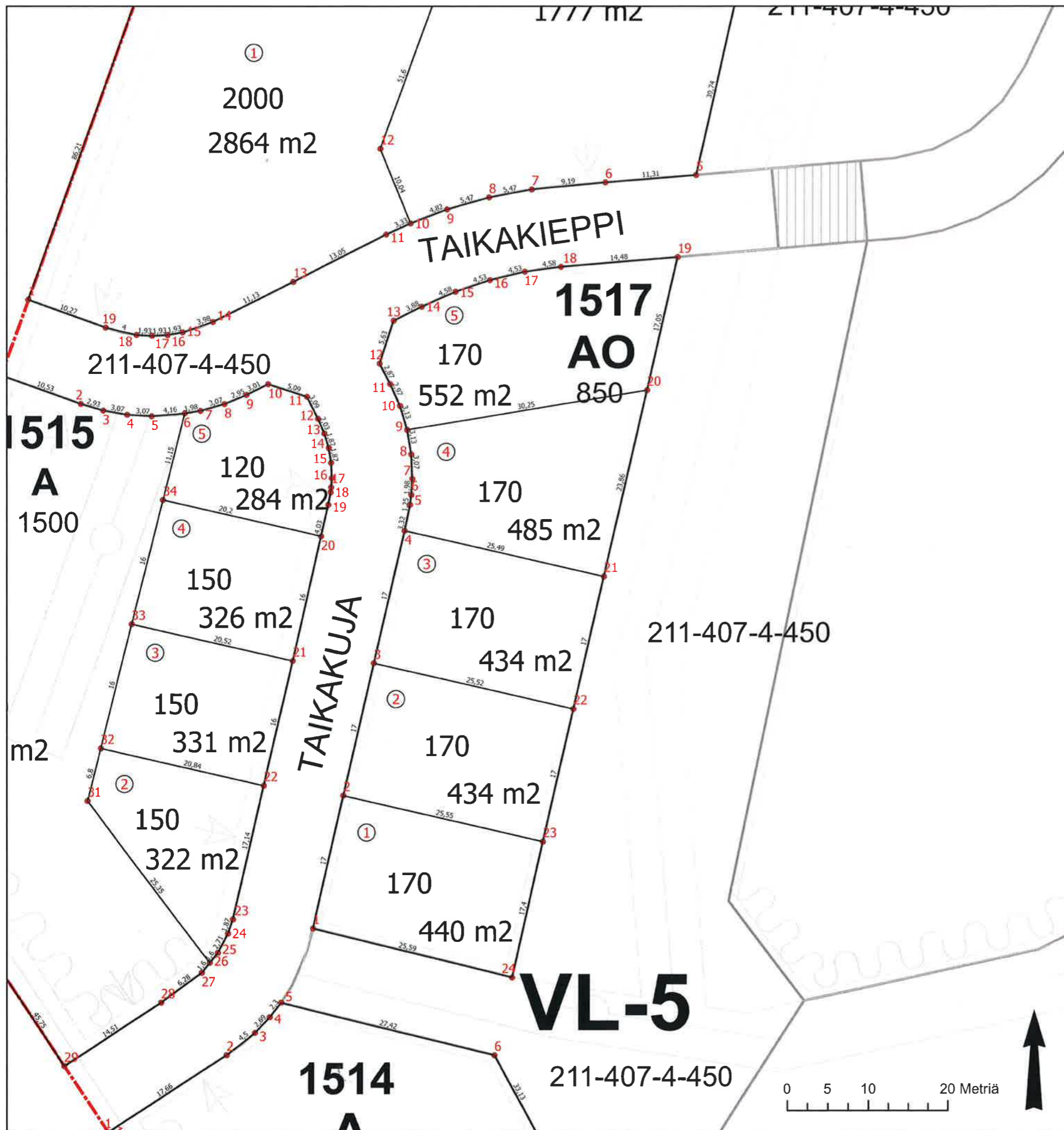


| Muodostuminen | | | |
|---------------|-----------------------------|--------------|---------------|
| Tontti | Pinta-ala (m ²) | Osapinta-ala | Kiinteistö |
| 211-1-1515-1 | 2040 | 2040 | 211-407-4-450 |
| 211-1-1515-2 | 322 | 322 | 211-407-4-450 |
| 211-1-1515-3 | 331 | 331 | 211-407-4-450 |
| 211-1-1515-4 | 326 | 326 | 211-407-4-450 |
| 211-1-1515-5 | 284 | 284 | 211-407-4-450 |

| numero | X | Y |
|--------|--------------|-------------|
| 1 | 24496570,843 | 6820747,566 |
| 2 | 24496580,750 | 6820744,010 |
| 3 | 24496583,556 | 6820743,180 |
| 4 | 24496586,579 | 6820742,648 |
| 5 | 24496589,642 | 6820742,463 |
| 6 | 24496593,784 | 6820742,809 |
| 7 | 24496595,734 | 6820743,137 |
| 8 | 24496598,683 | 6820743,988 |
| 9 | 24496601,402 | 6820745,120 |
| 10 | 24496604,089 | 6820746,465 |
| 11 | 24496608,930 | 6820744,894 |
| 12 | 24496610,352 | 6820742,146 |
| 13 | 24496611,171 | 6820740,288 |
| 14 | 24496611,707 | 6820738,493 |
| 15 | 24496612,014 | 6820736,644 |
| 16 | 24496612,091 | 6820734,714 |
| 17 | 24496612,020 | 6820733,560 |
| 18 | 24496611,943 | 6820732,943 |
| 19 | 24496611,648 | 6820731,387 |
| 20 | 24496610,743 | 6820727,459 |
| 21 | 24496607,149 | 6820711,868 |
| 22 | 24496603,555 | 6820696,276 |
| 23 | 24496599,704 | 6820679,571 |
| 24 | 24496599,112 | 6820677,802 |
| 25 | 24496597,870 | 6820675,392 |
| 26 | 24496596,874 | 6820674,144 |
| 27 | 24496595,878 | 6820672,895 |
| 28 | 24496590,815 | 6820669,175 |
| 29 | 24496578,691 | 6820661,209 |
| 30 | 24496553,570 | 6820699,441 |
| 31 | 24496581,581 | 6820694,361 |
| 32 | 24496583,243 | 6820700,958 |
| 33 | 24496587,152 | 6820716,477 |
| 34 | 24496591,061 | 6820731,996 |

| Tonttijako | | | | | |
|--------------------------|------------|------------|--------------------------|------------------|-----------|
| Asemakaava | 785 | Hyväksytty | 8.4.2019 | 1:500 | Kangasala |
| Uudet tontit | 1,2,3,4,5 | | Laskenut | Simo Veijalainen | |
| Tonttijakokartta | 1515:1 | | Piirtänyt | Simo Veijalainen | |
| Kortteli | 1515 | | | | |
| Tarkastanut | Hyväksynyt | | | | |
| Tontti-insinööri | 2.8.2021 | | Geodeetti | 2.8.2021 | |
| Nina Olli, Nina Yli-Olli | | | Nina Olli, Nina Yli-Olli | | |

tontti-insinööri, geodeetin sijainen



| Muodostuminen | | | |
|---------------|-----------------------------|--------------|---------------|
| Tontti | Pinta-ala (m ²) | Osapinta-ala | Kiinteistö |
| 211-1-1517-1 | 440 | 440 | 211-407-4-450 |
| 211-1-1517-2 | 434 | 434 | 211-407-4-450 |
| 211-1-1517-3 | 434 | 434 | 211-407-4-450 |
| 211-1-1517-4 | 485 | 485 | 211-407-4-450 |
| 211-1-1517-5 | 552 | 552 | 211-407-4-450 |

| numero | X | Y |
|--------|--------------|-------------|
| 1 | 24496609,714 | 6820678,437 |
| 2 | 24496613,530 | 6820695,003 |
| 3 | 24496617,345 | 6820711,569 |
| 4 | 24496621,161 | 6820728,136 |
| 5 | 24496621,827 | 6820731,392 |
| 6 | 24496621,981 | 6820732,629 |
| 7 | 24496622,104 | 6820734,603 |
| 8 | 24496621,982 | 6820737,668 |
| 9 | 24496621,468 | 6820740,752 |
| 10 | 24496620,575 | 6820743,748 |
| 11 | 24496619,377 | 6820746,465 |
| 12 | 24496618,057 | 6820749,015 |
| 13 | 24496619,790 | 6820754,369 |
| 14 | 24496623,256 | 6820756,118 |
| 15 | 24496627,442 | 6820757,985 |
| 16 | 24496631,732 | 6820759,430 |
| 17 | 24496636,140 | 6820760,464 |
| 18 | 24496640,679 | 6820761,085 |
| 19 | 24496655,105 | 6820762,299 |
| 20 | 24496651,311 | 6820745,680 |
| 21 | 24496645,999 | 6820722,415 |
| 22 | 24496642,216 | 6820705,841 |
| 23 | 24496638,432 | 6820689,268 |
| 24 | 24496634,560 | 6820672,309 |

| Tonttijako | | | | | |
|------------------------|-----------|------------|------------------------|------------------|-----------|
| Asemakaava | 785 | Hyväksytty | 8.4.2019 | 1:500 | Kangasala |
| Uudet tontit | 1,2,3,4,5 | | Laskenut | Simo Veijalainen | |
| Tonttijakokartta | 1517:1 | | Piirtänyt | Simo Veijalainen | |
| Kortteli | 1517 | | | | |
| Tarkastanut | | | Hyväksynyt | | |
| Tontti-insinööri | 2.8.2021 | | Geodeetti | 2.8.2021 | |
| Niina Olli, NIINA OLLI | | | Niina Olli, NIINA OLLI | | |

tontti-insinööri, geodeetin sijainen